



HEVI-HAUL
PRODUCTS THAT MOVE THE WORLD

MAXIMIZING MOVING VALUE & VERSATILITY

OPTIONAL VERSATILITY FOR THE PROFESSIONAL MOVER

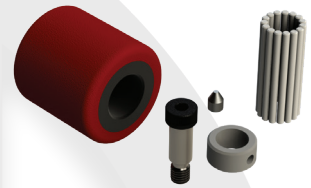
Hevi-Haul skates were originally designed with the professional machinery mover and rigger in mind. As a small, family owned business, we understand the value in versatility. We aim to provide our customers the option to maximize the value of the tools they use for moving machinery or other large equipment without having to purchase additional sets of skates for different moving environments or circumstances. Not only do our skates sometimes offer an increased load rating, they also offer the versatility of choosing which rollers to use that are best suited to the application. Keep in mind that wheels do take time to install, so this option may not be beneficial for every customer.



COMMON COMPONENTS

Each Hevi-Haul Skate model is built as a complete product, comprised of components designed and manufactured in house at our factory in Menomonee Falls, WI USA. Uniquely, our load moving skates have been designed with common components that are used exclusively in Hevi-Haul Skates. We use as many common components as possible to make skate conversions and repairs as seamless and cost effective as possible.

CONSULT EACH INDIVIDUAL MODEL'S SPECIFICATION SHEET FOR PARTS BREAKDOWNS.



UNDERSTANDING SKATE CAPACITY

In some cases, one skate model may seem visually identical to another, but there is always more than meets the eye. From the steel grade, dimensional parameters of the frame material, to the roller material, number of rollers making contact with the floor, axle material, and axle hardness, there are numerous variables that contribute to the load rating of a Hevi-Haul Skate that are not always seen at a surface level view. With these factors, many skate models gain or lose load capacity based on the roller and axle type used, as illustrated in the chart below.

ROLLERS AND AXLES ARE NOT INDIVIDUALLY LOAD RATED, AND ARE INTENDED ONLY AS REPLACEMENT PARTS FOR HEVI-HAUL SKATES

UNDERSTANDING SKATE ROLLER CONVERSION

Hevi-Haul products allow for the conversion of most of our skate models from steel rollers to poly rollers, and vice versa, by changing out the rollers that are best suited for the application and moving environment. In many cases, converting from polyurethane coated rollers to steel rollers increases the skate's capacity rating. This also works in the opposite manner, so always be mindful of the capacity differences, indicated in the chart below, when changing roller types between models. All products shipped and sold from the factory will be labeled with the specific model number and capacity, where applicable, at the time of purchase.

WE ARE NOT RESPONSIBLE FOR ANY MISUNDERSTANDING OF THE CAPACITY RATING

SKATE CONVERSION CHART*

*Not all Skate models are shown below. Call or visit hevihaul.com for more details.

Poly Skate Model	Capacity (Tons)	Conversion	Steel Skate Model	Capacity (Tons)	Axle Type
UM-HD-20-P	10	>	UM-HD-20	10	Steel
UM-HD-30-P	10	>	UM-HD-30	15	Hardened Steel
UMS-HD-20-P	10	>	UMS-HD-20	10	Steel
UMS-HD-30-P	10	>	UMS-HD-30	15	Hardened Steel
UM-HD-50-P	20	>	UM-HD-50	25	Steel
UM-HD-75-P	20	>	UM-HD-75	37.5	Hardened Steel
UMS-HD-50-P	20	>	UMS-HD-50	25	Steel
UMS-HD-75-P	20	>	UMS-HD-75	37.5	Hardened Steel

ROLLER VARIETIES

POLY COATED ROLLERS

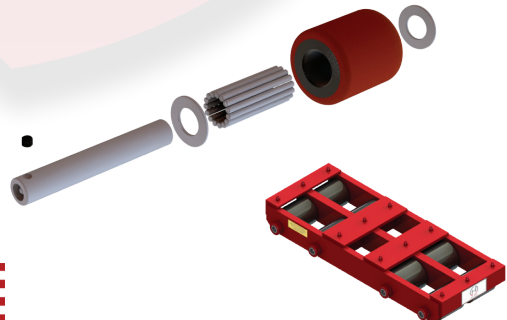
- Maximum Floor Protection
- Clean Environments
- Limited Resting Loads
- No Rough Floors
- No Debris

Each model of skate excels in different areas. Be sure to consult with your sales contact if you have questions.

STEEL ROLLERS

- All Purpose Moving
- Maximum Durability
- Extended Resting Loads
- Permanent Installation
- Rough Floors/Uneven Floors

Each model of skate excels in different areas. Be sure to consult with your sales contact if you have questions.



SKATE ROLLER CONVERSION GUIDE

LOCAL: (262) 502-0333 | TOLL FREE: (800) 558-0577 | EMAIL: SALES@HEVIHAUL.COM

WWW.HEVIHAUL.COM